



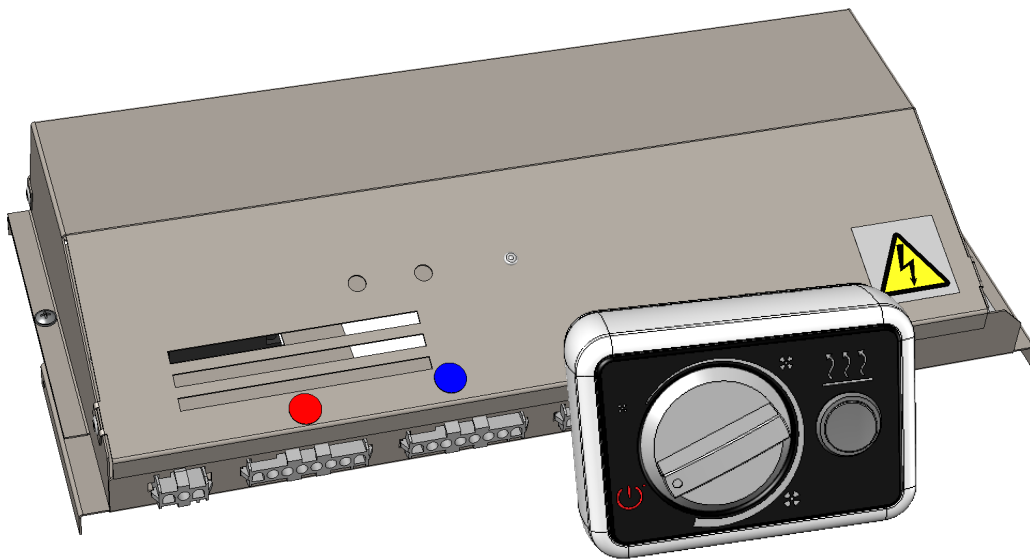
PARTNER
IN VENTILATION
2VV.CZ

EN

FINESSE EC/STANDESSE EC

AirGENIO

BASIC EC



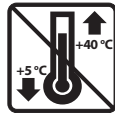
INSTALLATION AND OPERATING INSTRUCTIONS

CHECK DELIVERY



DON'T OVERLOOK

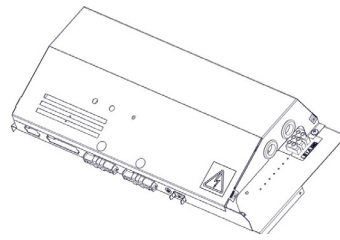
- Upon delivery, check the packaged product immediately for damage. If the packaging is damaged, call the carrier. If a claim is not made in time, any future claims cannot be made.
- Check that the type of product received matches your order. In the event of a mismatch, report the defect to the supplier immediately.
- After unpacking, check that the regulation and other components are in order. If in doubt, contact the supplier.
- Never install a damaged product!
- If you do not unpack the control immediately after delivery, it must be stored in a dry indoor environment with an ambient temperature of **+5 °C to +40 °C**.



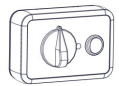
	<p>All packaging materials used are environmentally friendly and can be reused or recycled. Make an active contribution to environmental protection by ensuring proper disposal and reuse of packaging materials.</p>	
--	-----------------------------------------------------------------------------------------------------------------------------------------------------------------------------------------------------------------------	--

PACKAGING CONTENT

1x



1x



1x



DON'T OVERLOOK

- If the product has been transported in temperatures below 0 °C, it must be left in working conditions for at least 2 hours without switching on after unpacking.



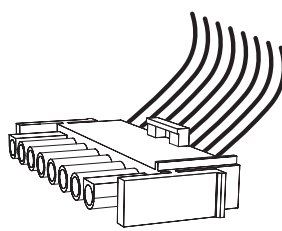
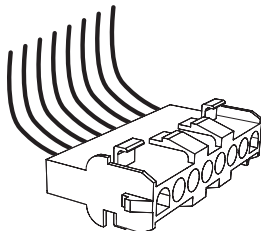
INSTALLATION

CONTROL MODULE

FINESSE EC / STANDESSE EC air curtains are manufactured with a universal connection interface. FINESSE EC / STANDESSE EC air curtains can be controlled by one of the following control modules: BASIC, COMFORT, SUPERIOR.

The control modules are necessary accessories and must be ordered separately.

The air curtain is connected to the control module by means of „Quick Connect Connectors“.

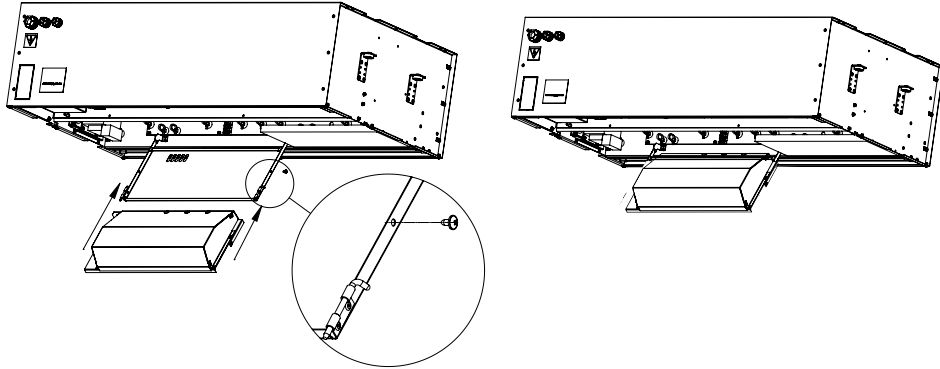




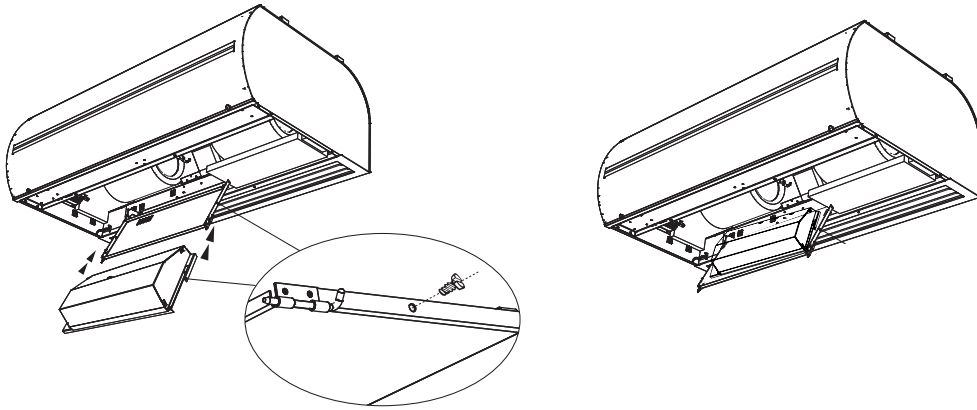
INSTALLATION

Insert the control module into the air curtain:

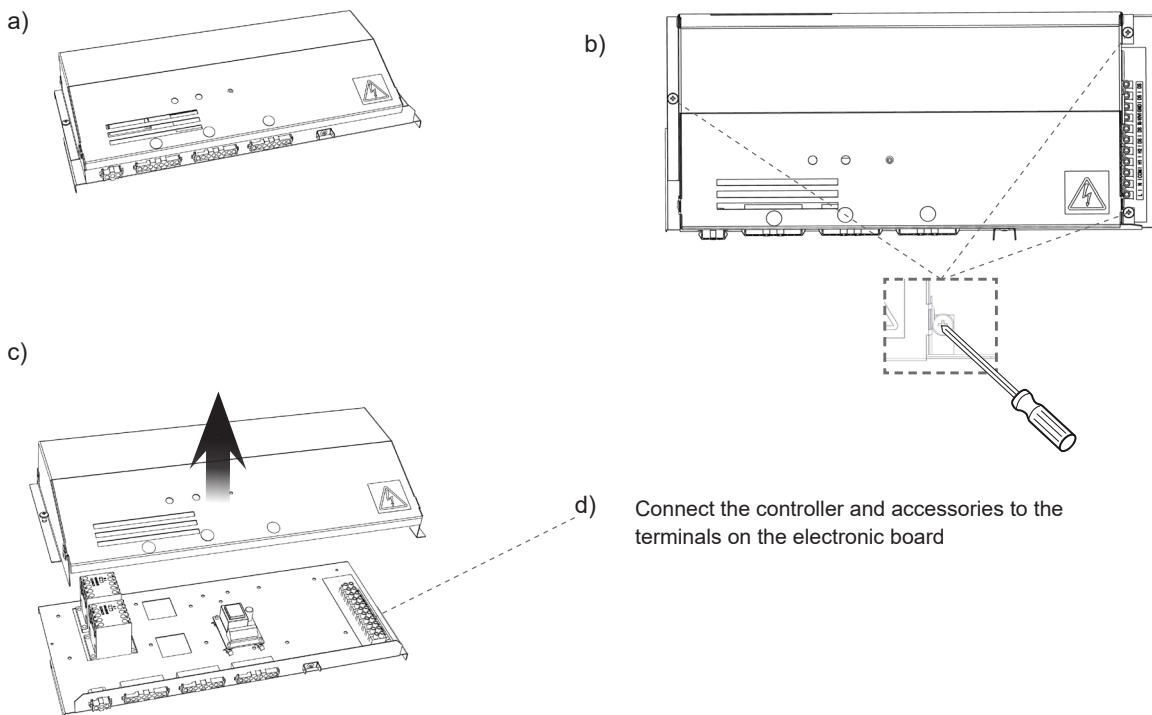
FINESSE EC (VCFI4)



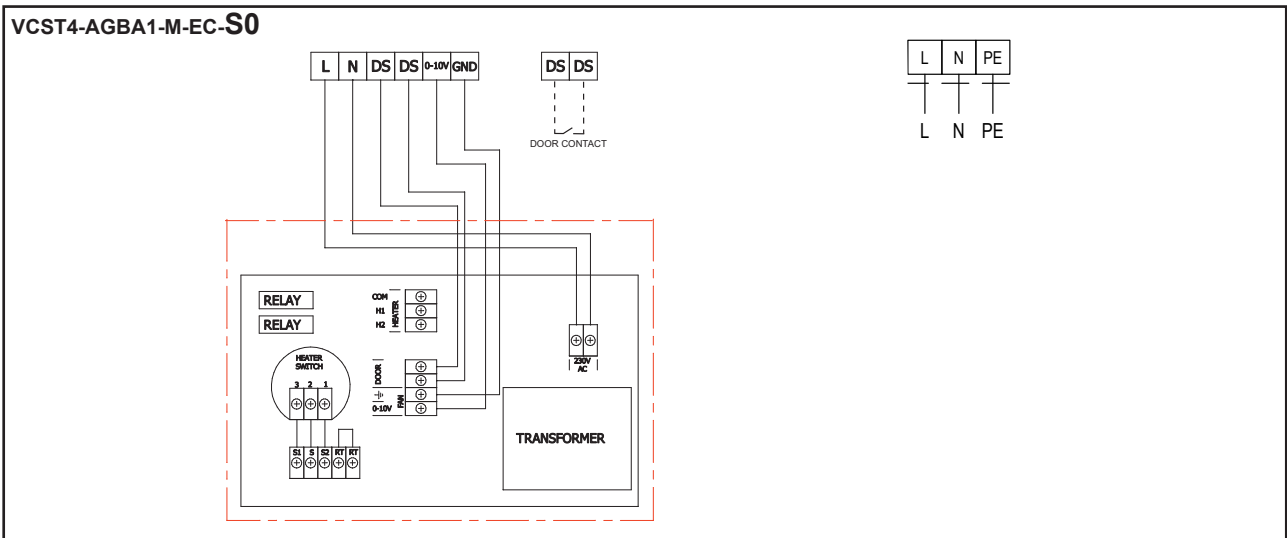
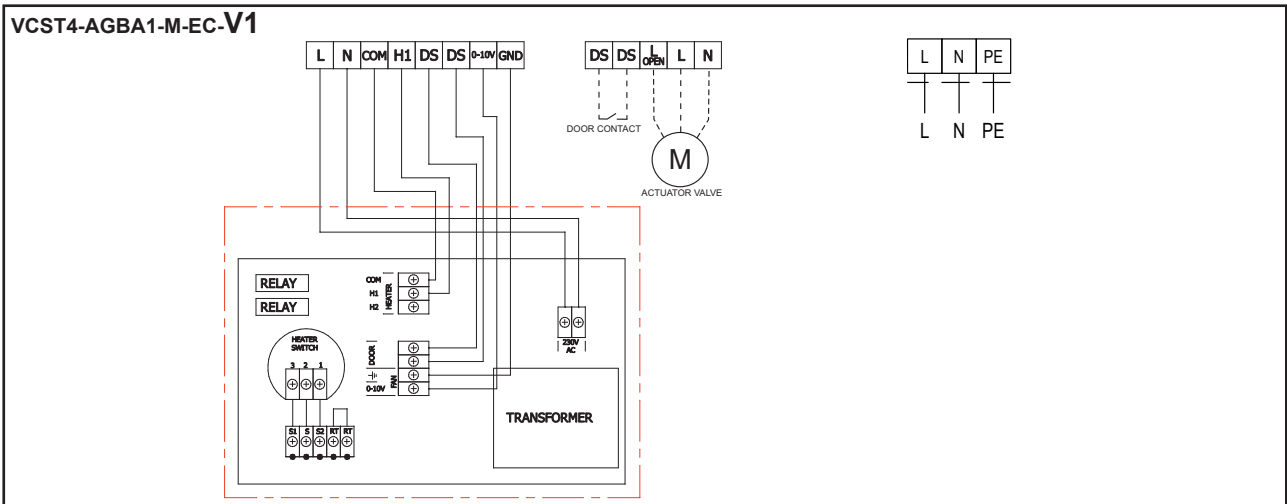
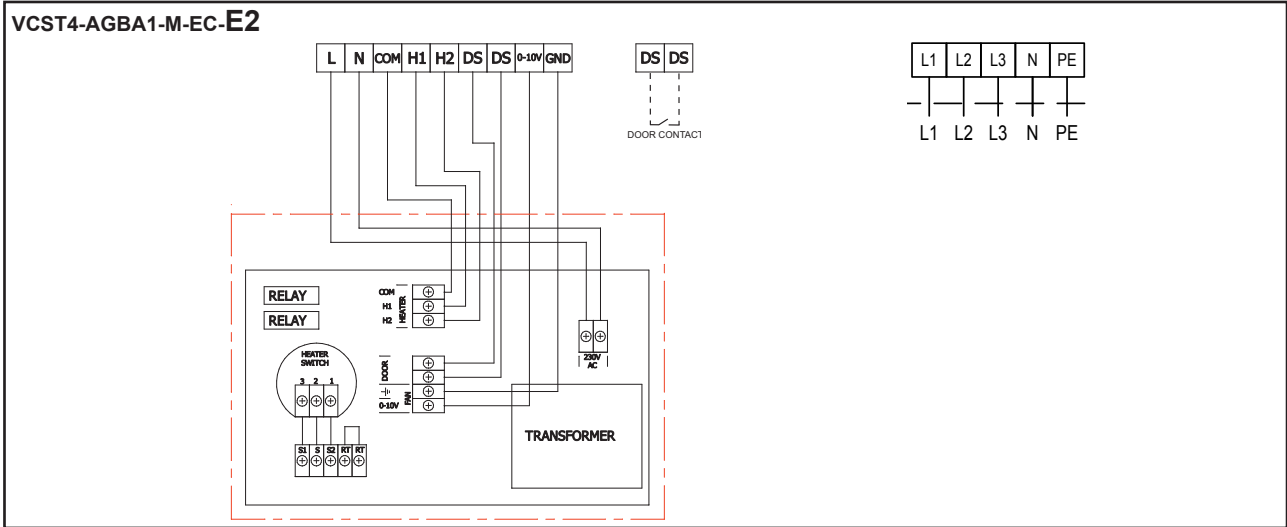
STANDESSE EC (VCST4)



Connecting the control panel and accessories



WIRING OF THE CONTROLLER AND ACCESSORIES





CONNECTION OF EXTERNAL ACCESSORIES



DON'T OVERLOOK

When connecting external accessories, the air curtain must be disconnected from the power supply. The air vent must be disconnected from the mains.

All external control components must be wired according to the wiring diagram.

Connectors must be plugged into the electrical board with adequate force and always perpendicular to the base.

Door switch DS



TECHNICAL INFORMATION

- Suitable for all BASIC controls
- Isolated opening contact with maximum voltage 230V, 6A
- IP67, can be connected as a switching or opening contact

Connectors on control modules: DS / DS



ATTENTION!

Not supplied with the product.

Door switch DK-1 / DK-B3



TECHNICAL INFORMATION

- Isolated door contact with maximum voltage 12V.
- Cable: Maximum length: 50 m



ATTENTION!

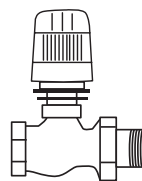
Not supplied with the product.

Thermostatic valve– TV1/1



TECHNICAL INFORMATION

- Thermostatic valve for water exchanger control
- Suitable for all types of screens with water heat exchanger
- Works independently of the BASIC controller



ATTENTION!

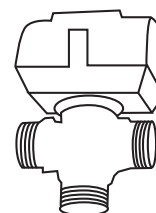
Not supplied with the product.

Zone valve ZV / RT-3-xx



TECHNICAL INFORMATION

- Zone valve for water heat exchanger control
- Cable: Three-conductor cable with a cross-section of 1.5 mm², 230 V/ 50 Hz.



ATTENTION!

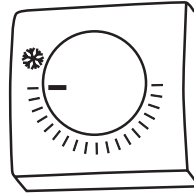
Not supplied with the product.

Room thermostat -TER-P



TECHNICAL INFORMATION

- Room thermostat for heating control
- Cable: Two-core cable with a cross section of 0.5 mm², 230 V/ 50 Hz.

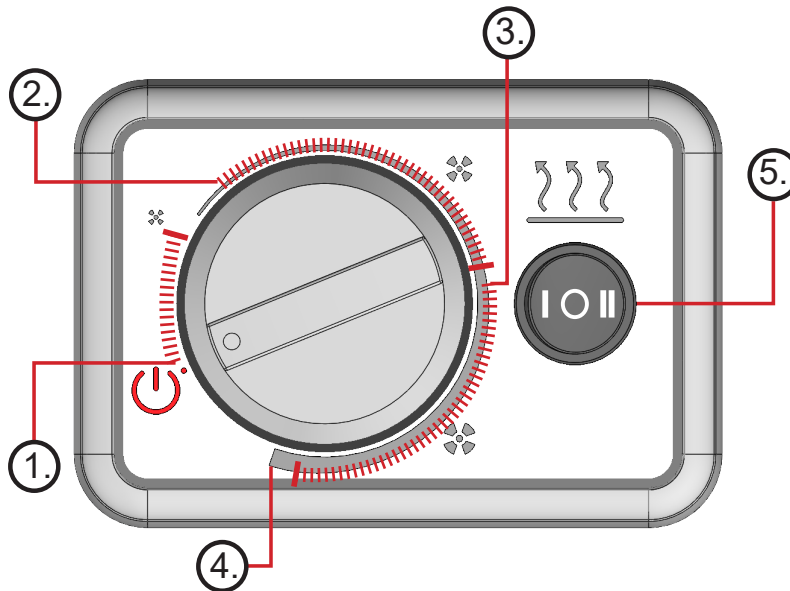


ATTENTION!

Not supplied with the product.



CONTROL

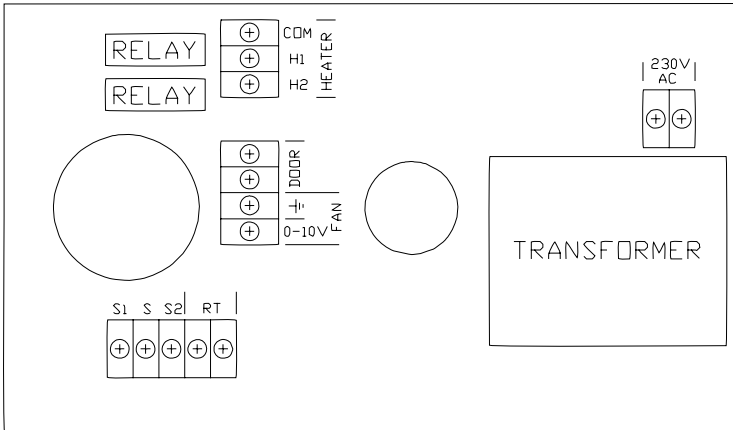


1	OFF - fan OFF, heating not active
2	Low fan speed, heating enabled (heating level 1 enabled)
3	Medium fan speed, heating enabled (heating level 1 and 2 enabled)
4	High fan speed, heating is enabled (heating level 1 and 2 enabled)
5	Heating switch (water heater = heating level 1, electric heater = heating level 1 and 2)

CONTROL DESCRIPTION

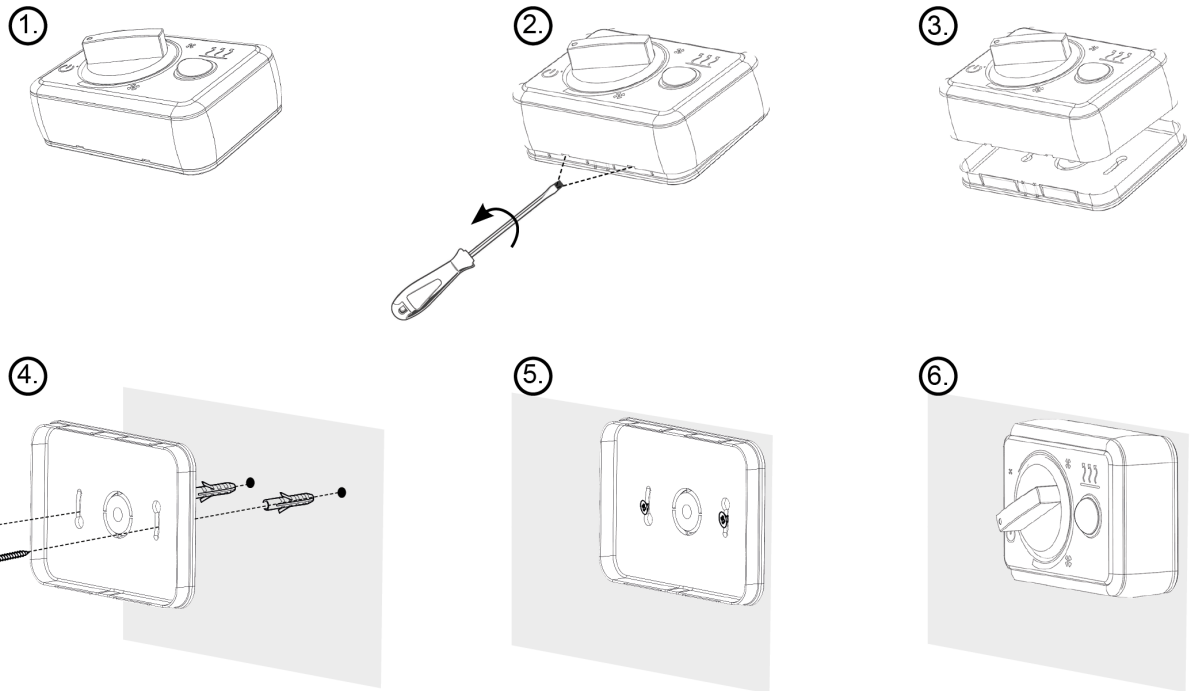
Controls description:

- Control EC motors with 0-10V continuous output
- Control heating output in the range of OFF / Stage 1 / Stage 2 using potential-free relay outputs with a maximum relay load of 230V / 5A. NOTE: Not available for the non-heating version
- Connect a door contact or external switch (by switching off the whole product when the contact is opened)
- Connect room thermostat (switch off heating when contact is opened) - NOTE: Not available for version without heating



TERMINAL	FUNCTIONALITY	DESCRIPTION
S1	ENTRY TO THE INTERNAL HEAT CONTROLLER SWITCH	SWITCH FOR 1ST HEATING STAGE (FACTORY WIRED)
S		COM INTERNAL HEATING SWITCH (FACTORY WIRED)
S2		SWITCH FOR 2ND HEATING STAGE (FACTORY WIRED)
RT	ROOM THERMOSTAT	DI SWITCHES ONLY THE THERMAL OUTPUTS ON/OFF (FACTORY WIRED = ELECTRICALLY CONNECTED)
COM	COM HEATING	INPUT FOR HEATING CONTROL SIGNAL (MAX. LOAD 230V/5A)
H1	1. HEATING STAGE	OUTPUT OF THE 1ST HEATING STAGE
H2	2. HEATING STAGE	OUTPUT OF THE 2ND HEATING STAGE
DOOR	DOOR CONTACT (EXT CTRL, ROOM THERMOSTAT)	DI SWITCHING ON/OFF COMPLETE CONTROLLER (FAN AND HEATER)
0-10V DC	0-10V MOTOR CONTROL	OUTPUT FOR MOTOR CONTROL (MAX. 10 MOTORS)
GND	GND MOTOR CONTROL	
~230V	L - 230VAC	MAIN POWER SUPPLY 230V
	N - 230VAC	

NOTE: Terminals S1, S, S2, RT, COM, H1, H2 are not used for the non-heated screen. The non-heated version only supports fan control and connection of an external contact to the DOOR terminals (door switch, external control switch, ...).



*The controller can only be installed on a wall or on a fixed non-portable object.
The cable must be secured against being pulled out of the controller.*



COMMISSIONING



DON'T OVERLOOK

Before starting the air curtain, check the following:

- Have you left any tools or objects inside the panel, causing damage to it?
- Is there an adequate supply of electricity and, if necessary, heating water?
- Have you closed the air curtain correctly?
- Has the control module been connected correctly?
- Does the air curtain have adequate protection according to the applicable standards?
- that the equipment is correctly secured to the supporting structure
- that the equipment is properly sealed
- that the electrical supply is properly connected, including grounding and protection of external triggers.
- that all elements of the electrical components are properly connected
- that the installation conforms to all instructions in this manual
- that no tool or other object that could damage it is left in the equipment



ATTENTION!

- Any tampering or changes to the internal interconnection are prohibited and will void the warranty.
- We recommend using the accessories supplied by 2VV or its authorized distributors. If in doubt about the possibility of using non-original accessories, please contact your supplier.

When the main power supply is turned on, turn the switch to one of the three fan speed settings to bring the unit into operation.



TROUBLESHOOTING

In case of any intervention on the air curtain, the main power supply must be disconnected. If you are not sure about the correctness of the steps, never proceed with any repair and call a professional service !!!

Device behaviour	Anticipated problem	Solution
The device is not working	Interrupted power supply	Check that the power supply is not interrupted
	Cracked fuse	Check the fuse located on the control module
Heating switches off spontaneously	The heater is overheating	The electric heater overheats due to insufficient air flow. Check that the fans are running at full speed and that the air supply to the unit is not restricted.

ATTENTION!

The main electrical supply must be switched off before any tampering with the inside of the air curtain. The air curtain must be allowed to cool down!



MAINTENANCE

CLEANING

ATTENTION!

- The use of compressed air, chemicals, solvents or water for cleaning is prohibited.
- Use a soft broom or vacuum cleaner to clean the intake cover and the inside of the air curtain.
- See the instructions for installing the air curtain



SERVICE

IF YOU CAN'T FIX THE FAULT YOURSELF

If you have not been able to resolve the problem, please contact your supplier or 2VV's exclusive representative. Warranty and post-warranty service is provided by the supplier or by one of the authorised service organisations, a list of which is available from the supplier.

Please provide the supplier or service centre with the information below:

- the type designation of the air curtain,
- the accessories used,
- Installation location,
- serial number,
- Installation conditions (including electrical),
- running time,
- detailed description of the fault.

PRODUCT DECOMMISSIONING - DISPOSAL

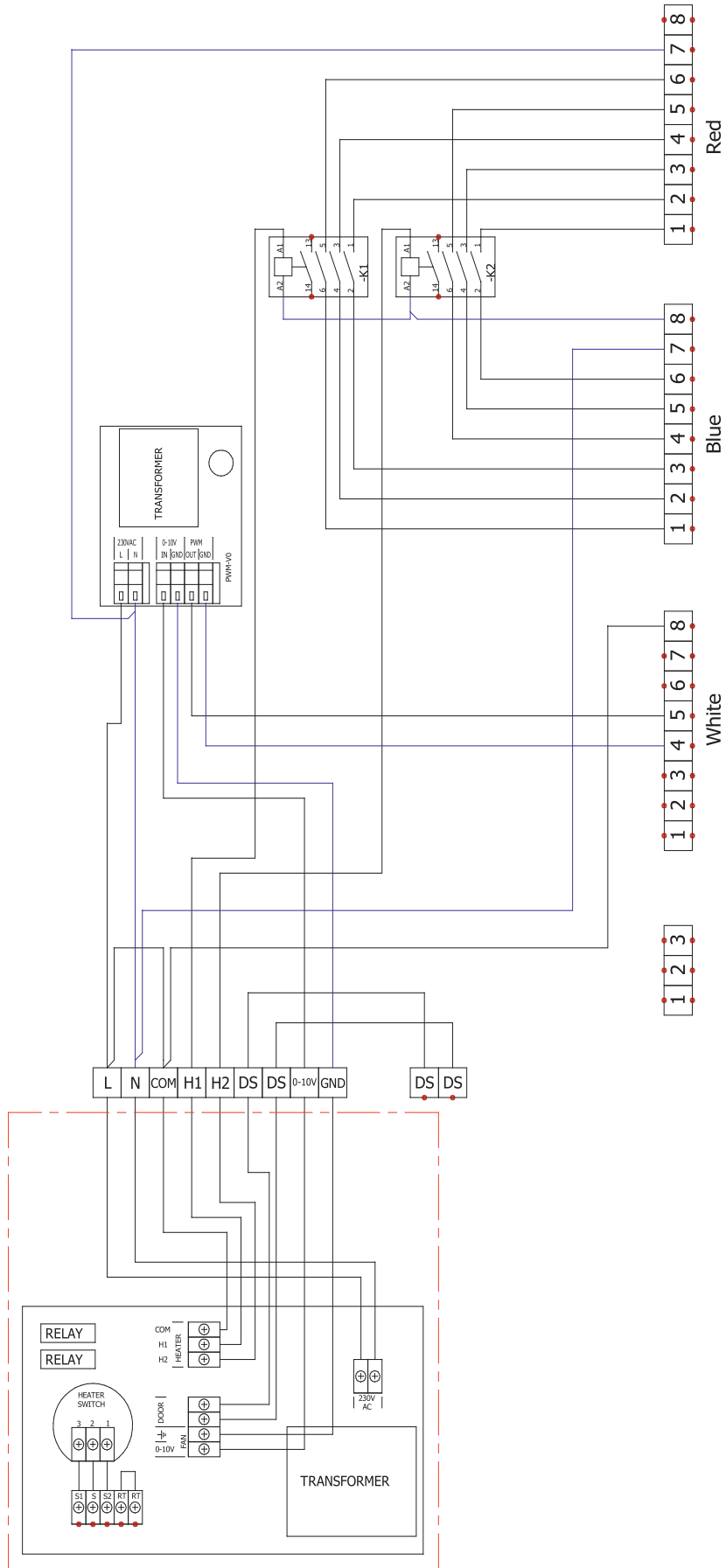
Make the product unusable before disposing of it. Even old products contain raw materials that can be reused. Take these to a recycling collection centre. It is better to have the product disposed of in a place that specialises in this, so that recyclable materials can be used further. Dispose of unusable parts of the product in a controlled landfill.



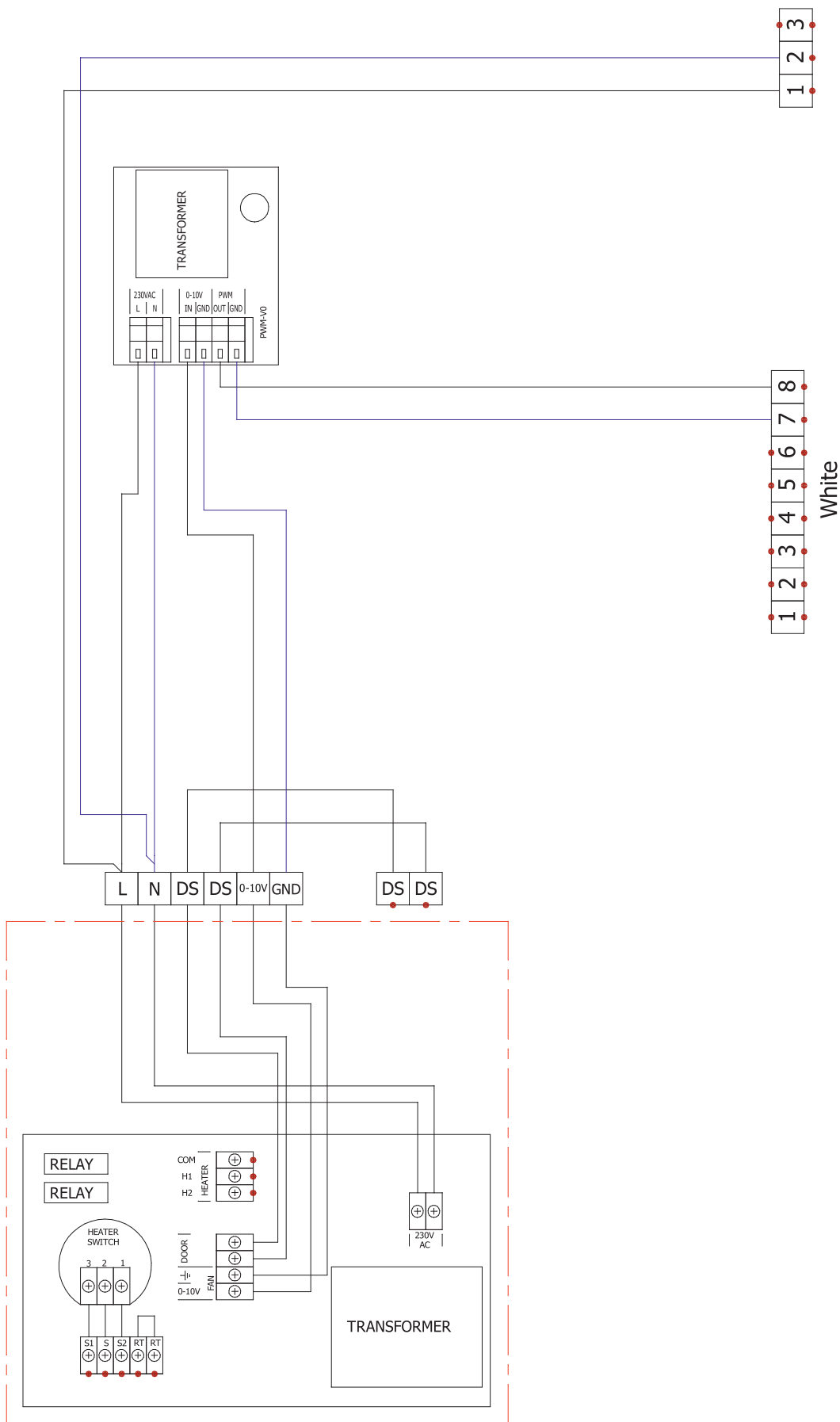
The disposal of materials must comply with the relevant national waste disposal regulations.



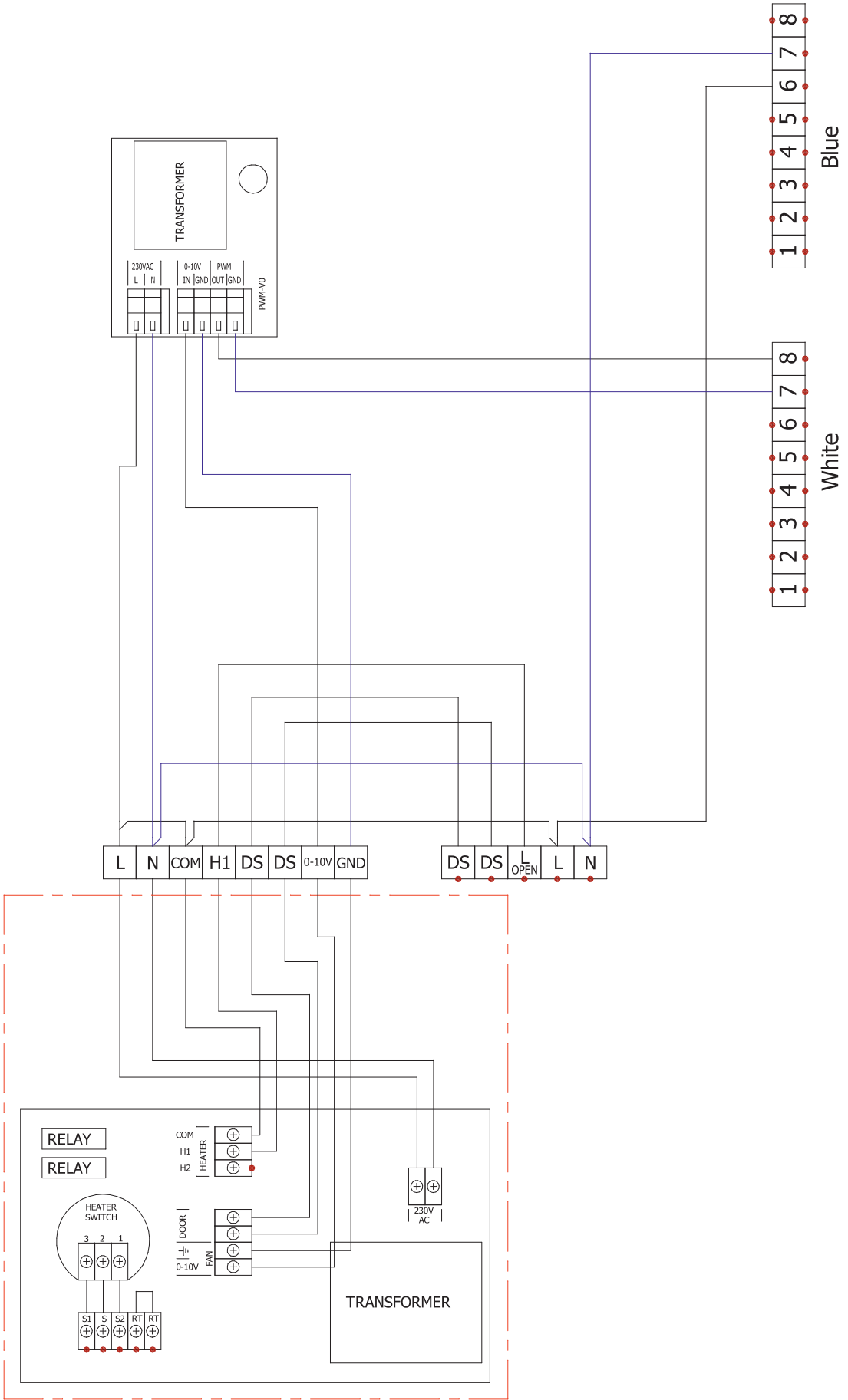
VCST4-AGBA1-M-EC-E2



VCST4-AGBA1-M-EC-S0



VCST4-AGBA1-M-EC-V1



CONCLUSION

If you have any doubts or questions, please do not hesitate to contact our sales or technical support department.

CONTACT

Adresa:

2VV, s.r.o.,
Fáblovka 568,
533 52 Pardubice,
Česká republika

Internet:

<http://www.2vv.cz/>

